

# Don't Do It Alone! Engage the Right Partners to Plan for Your ECIDS

Howard Morrison &  
Rebecca Valenchis

---

May 4, 2023 – 11 AM PT / 2 PM ET  
SRI Early Childhood State Systems Building  
Webinar Series



# SRI Early Childhood State Systems Building Webinar Series

**Wednesday, March 15, 2023; 9 AM – 10 AM PT:** Part 1: Needs Assessment and Strategic Planning: What's Data Got to Do With It?

**Tuesday, April 4, 2023; 11 AM – 12 PM PT:** Part 2: Let's Work Together (to Make Families' Lives Easier)! How to Coordinate Eligibility and Enrollment to Increase Equitable Access to Services

**Thursday, May 4, 2023; 11 AM – 12 PM PT:** Part 3: Don't Do It Alone! Engage the Right Partners to Plan for Your ECIDS

**Thursday, June 8, 2023; 12 PM – 1 PM PT:** Part 4: Information Is Key: Engaging Families by Supporting Decision-Making

# SRI Early Childhood State Systems Building Webinar Series

**SRI Education™**

A DIVISION OF SRI INTERNATIONAL

@SRI\_Education



**Howard  
Morrison**  
SRI International

## Part 3: Don't Do It Alone! Engage the Right Partners to Plan for Your ECIDS

Thursday, May 4, 2023

2 PM – 3 PM EST



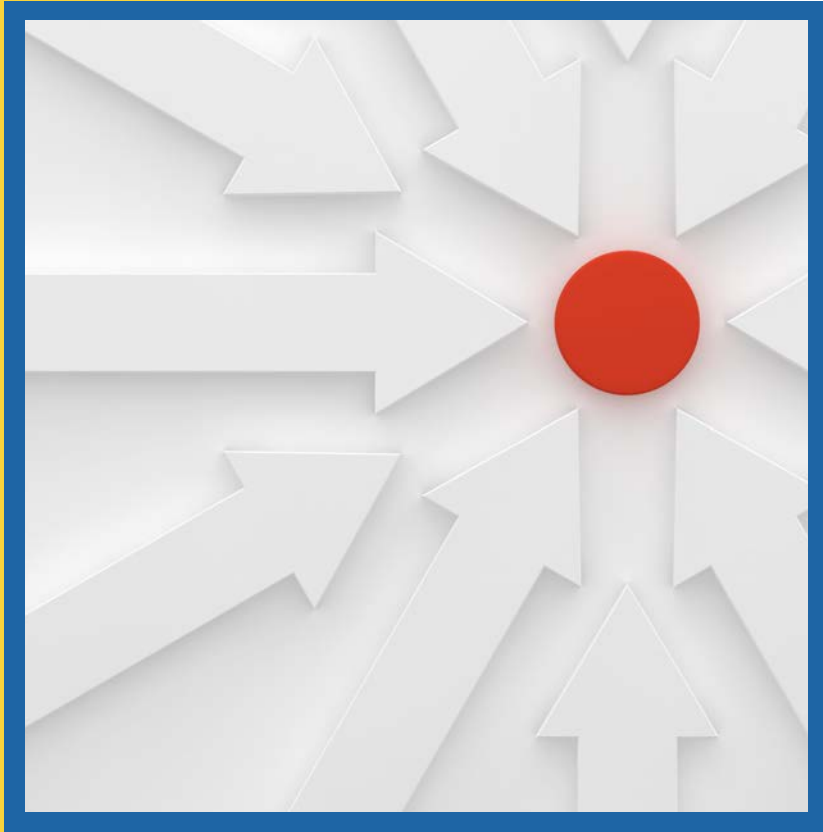
**Rebecca  
Valenchis**  
SRI International

Register at <https://bit.ly/3mizxlf>

# Welcome

- Share one thing you are hoping to learn today
- Share your name and role in the chat





## Today's Focus

- How to leverage a **use case** to **engage your partners** in building and expanding your **early childhood integrated data system (ECIDS)**

# What is an ECIDS?



Source: [What Is an Early Childhood Integrated Data System?](#) n.d., by SLDS State Support Team.

## ECIDS as a Systems Building Lever

- Provide integrated, cross-program data to inform decisions about early childhood policies, services, and education
- Create a coordinated approach to interagency services
- Provide timely, accurate information to parents/families and providers
- Improve equitable access to programs, supports, and services
- Inform how to prepare all children for academic success

**We want to hear from you!**

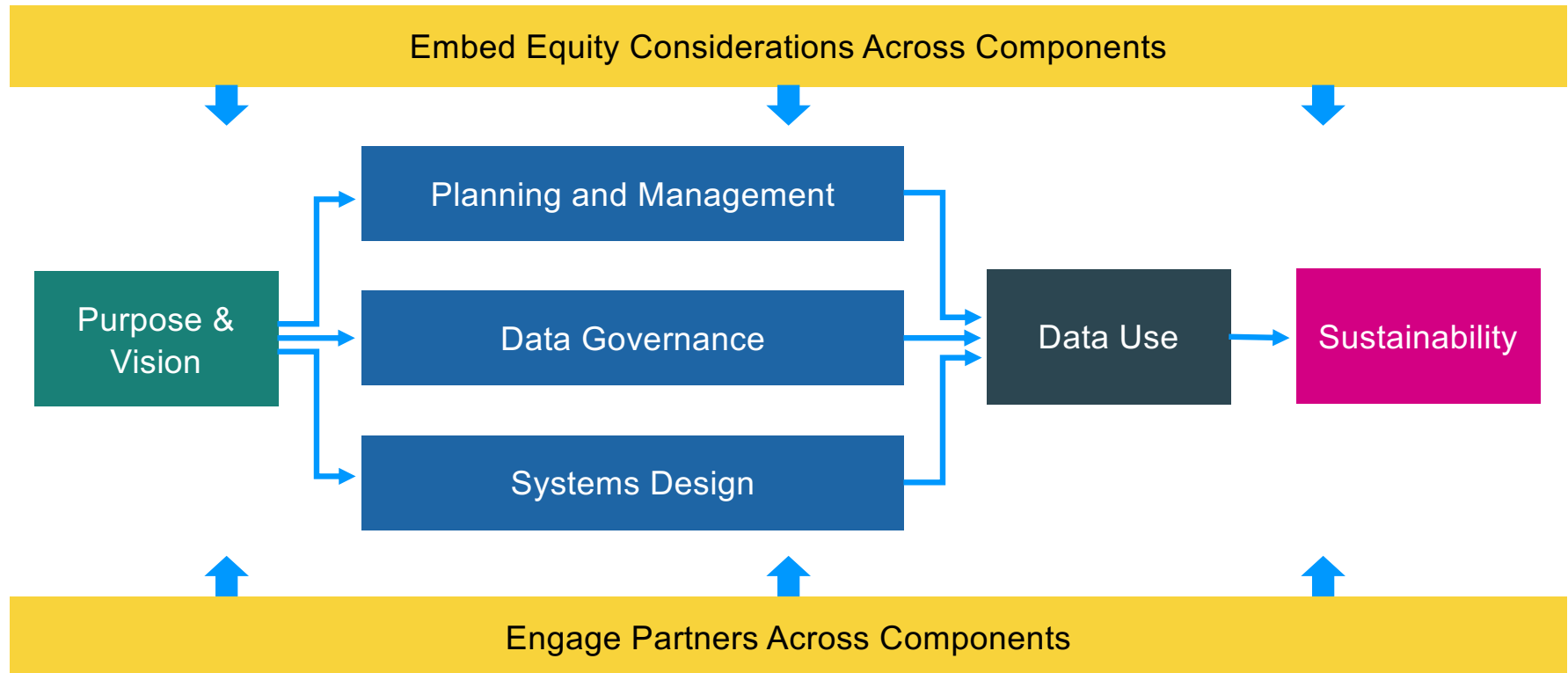




# Developing an ECIDS Is a Journey



# ECIDS Components



Note. Adapted from [Early Childhood Integrated Data Systems Toolkit](#), 2021, by SLDS State Support Team.

# A Few Things to Know Before You Go

- Realize that developing an ECIDS takes time.
- Leverage existing and identify new resources, projects, or initiatives that may be able to support an ECIDS.
- Identify individuals across agencies to champion an ECIDS and create a core team.

# Leveraging a Use Case



# Use Case Overview



**Why start with a use case?**



**What is a use case?**



**What are the benefits of a use case?**

**We want to hear from you!**



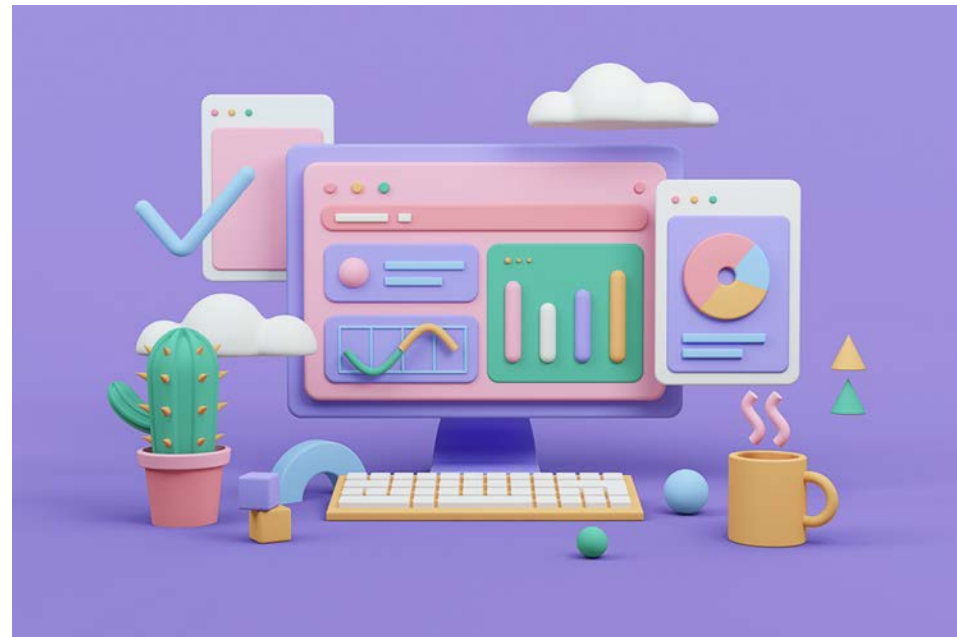
## Use Case Components – Information Needs

- Background information
- State priority/goal
- Key programmatic or policy questions
- Primary audience/user
- Expected actions
- Impact



# Use Case Components – Analytic Design

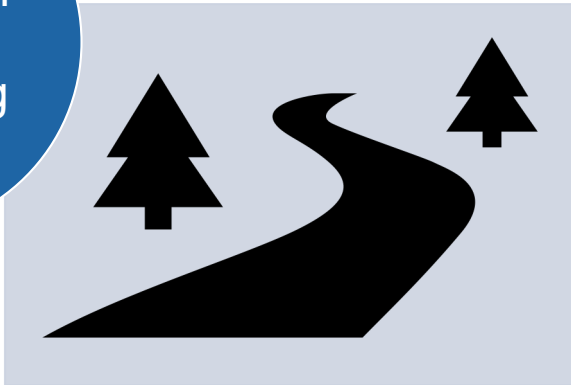
- Functionality
- Access level
- Frequency
- Data elements required



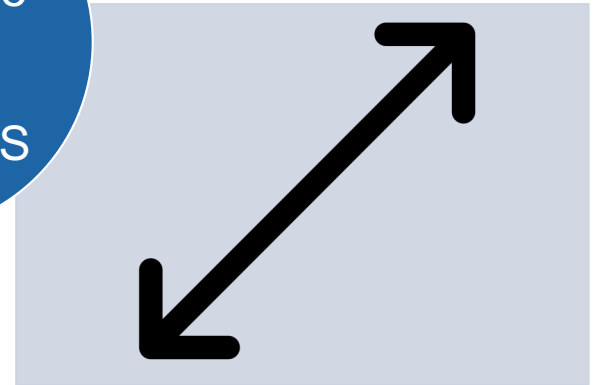


## Two Ways to Utilize a Use Case

A use case is one path to developing an ECIDS



A use case can also be used to expand your ECIDS



**We want to hear from you!**

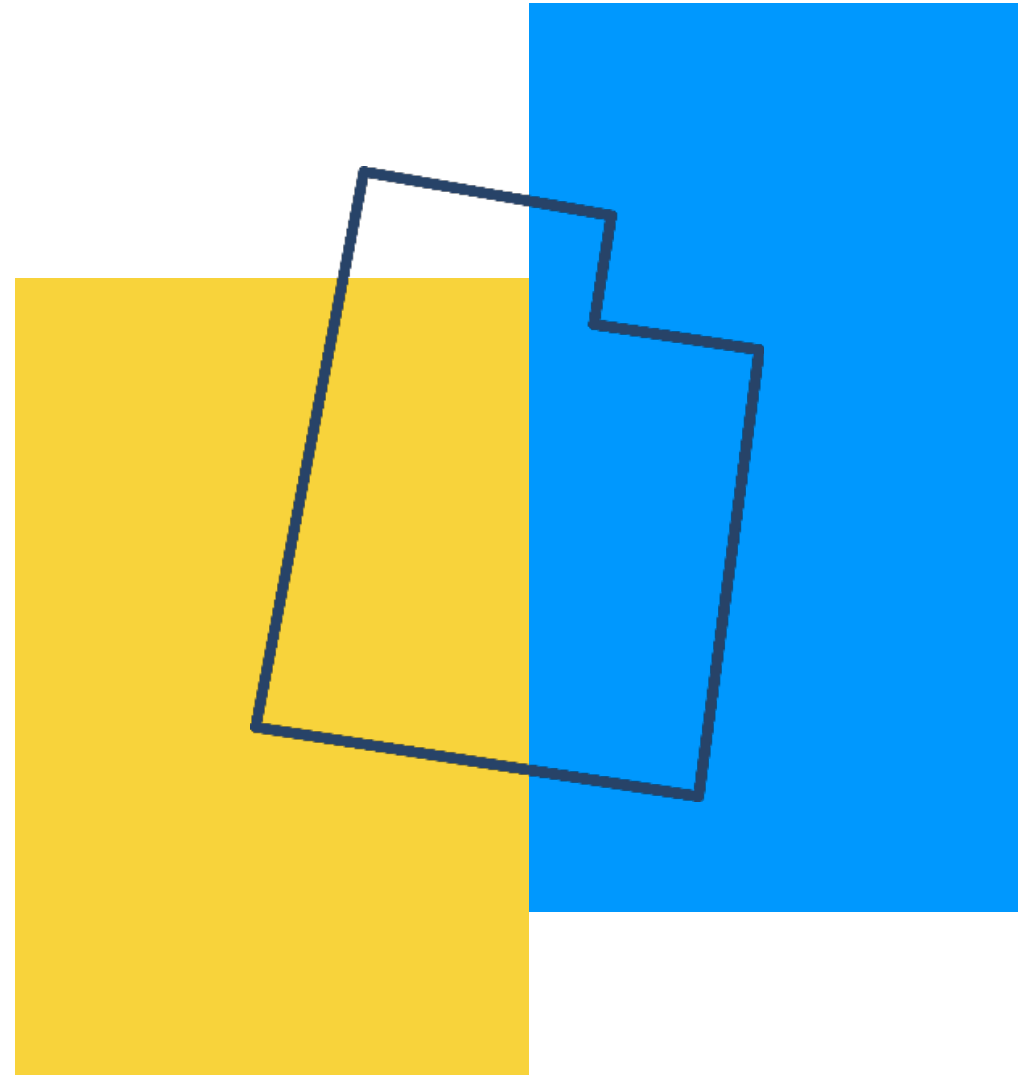


## State Example

---

### Utah

- Created its Community Assessment Tool as part of its ECIDS



# The Process For Determining Your Use Case



# Engaging Partners – A Closer Look

Engage partners to:

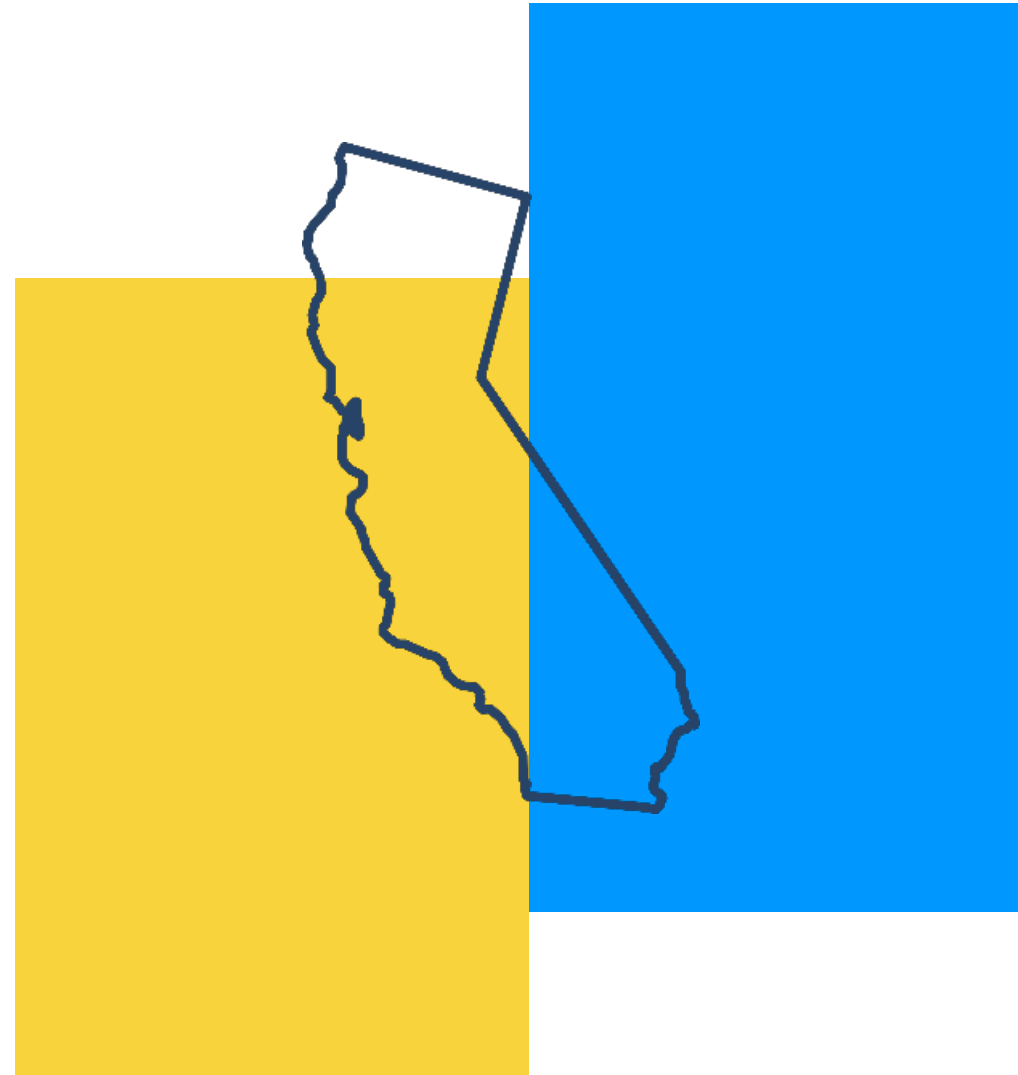
- Identify policy questions
- Align policy questions to topic areas
- Prioritize policy questions and/or topic areas
- Develop the content for the use cases

## State Example

---

### California

- Received support from the PDG B-5 TA Center to prioritize its policy and topics and plan for its use case development and partner engagement



# Develop a Use Case

Let's unpack that ...



# Identify Your Core Team

- At least one person from each program or agency represented
- Ensure individuals with decision-making authority are involved
- Identify individual with technical expertise



# Complete a Draft of the Information Needs

<b>Background</b>	<ul style="list-style-type: none"> <li>The state has four strategic priorities for early childhood, one of which ensures all children enter school ready to learn</li> </ul>
<b>State Priority/Goal</b>	<ul style="list-style-type: none"> <li>Provide schools/programs and families with greater insight into the specific strengths and needs of the incoming kindergarten cohort and professional development supports</li> </ul>
<b>Key Programmatic or Policy Question(s)</b>	<ul style="list-style-type: none"> <li>Are schools ready to meet the needs of incoming kindergarteners?</li> <li>Are children entering school ready?</li> <li>Are communities prepared to offer opportunities to promote readiness for early learning supports?</li> </ul>
<b>Primary Users/Audience</b>	<ul style="list-style-type: none"> <li>District early learning director</li> <li>K-3 district principals</li> <li>K-3 community partner providers</li> </ul>
<b>Actions Expected</b>	<ul style="list-style-type: none"> <li>Determine appropriate professional development opportunities for educators/staff to meet the needs of the incoming kindergarten cohort</li> <li>Identify potential shared professional development opportunities between early care and education programs</li> <li>Identify targeted family/parent outreach strategies that support families at home</li> </ul>
<b>Impact</b>	<ul style="list-style-type: none"> <li>State and community leaders are able to make a decision around allocation and provisions of training</li> <li>District and community-based providers work together to provide shared professional development and training (avoiding duplication of effort)</li> <li>District leaders and practitioners are aligning their training and practice across systems</li> <li>Advocacy organizations are able to increase public support for systems serving children that promote successful school readiness and transitions for all children</li> </ul>

[ECDataWorks Programmatic Use Case for the Development of an Analytic Tool](#)

# Complete a Draft of the Analytic Design

<b>Functionality</b>	<ul style="list-style-type: none"><li>• Filter by state, region, district</li><li>• Filter by data elements</li><li>• Graphs, charts, maps</li></ul>
<b>Access Level</b>	<ul style="list-style-type: none"><li>• State</li><li>• Region</li><li>• District</li><li>• School level</li></ul>
<b>Frequency</b>	<ul style="list-style-type: none"><li>• Quarterly</li><li>• Annually</li></ul>
<b>Data elements required</b>	<ul style="list-style-type: none"><li>• Program type (e.g., child care, Head Start, public/private PreK)</li><li>• Child attributes (e.g., race/ethnicity)</li><li>• Program curriculum</li><li>• Family supports</li><li>• End of year prekindergarten data</li><li>• Beginning of year kindergarten data (KEA)</li></ul>

[ECDataWorks Programmatic Use Case for the Development of an Analytic Tool](#)

# Engaging Partners in the Use Case Development



**SRI International<sup>®</sup>**

## Potential Partners

- Program and technical subject matter experts at the state, regional, or local level
- Users of the analytic tool or ECIDS
- Advocates and leaders at early childhood organizations
- Researchers at institutions of higher education
- Parents or family organizations
- Policymakers

# Lessons for Engaging Partners

Create strategic goals for engagement

Differentiate engagement opportunities

Create feedback opportunities

Maximizing Appropriate Involvement  
of ECIDS Community Members

## How to Put This Into Practice

Engage partners to:

- Review and provide input on the information needs
- Review and provide input on the analytic design
- Review and provide feedback on the conceptual mock-up

## Final Steps for the Core Team

- Finalize the use case
- Finalize the conceptual mock-up
- Obtain signoff from leadership (program and IT)
- Begin meeting with IT partners (including leadership) for product development



## How to Use and Apply

- Agency leadership
- Data governance bodies
- Partners
- Policymakers



## Hot Takes

- Having multiple champions
- Building relationships
- Communicating with partners and leadership
- Coordinating with your core team and partners takes time
- Build partner capacity in the use case development process
- Make informed decisions about early childhood policies, services, and education

# Resources

- [Developing Programmatic Use Cases \(Webinar\)](#)
- [Developing Use Cases to Support Your EI and ECSE Data Analytics](#)
- [ECDataWorks Programmatic Use Case for the Development of an Analytic Tool](#)
- [Center for IDEA Early Childhood Data Systems \(DaSy\) Data Linking Toolkit](#)
  - [Step 2 Packet: Assess Partner Readiness](#) (use case template)
- [ECIDS Toolkit](#)
- [ECDataWorks Community – Blogs and Podcasts](#)
- [What Is an Early Childhood Integrated Data System?](#)
- [Early Childhood Policy Matters Podcasts](#)

# Contact Us

- [earlylearning@sri.com](mailto:earlylearning@sri.com); [howard.morrison@sri.com](mailto:howard.morrison@sri.com); [rebecca.valenchis@sri.com](mailto:rebecca.valenchis@sri.com)



**Howard Morrison**

Early Learning, State Strategy & Support,  
Systems Thinker and Early Childhood Data En...



**Rebecca Valenchis**

Pursuer of Positive Outcomes for All Children  
and Families



# SRI Early Childhood State Systems Building Webinar Series

**Wednesday, March 15, 2023; 9 AM – 10 AM PT:** Part 1: Needs Assessment and Strategic Planning: What's Data Got to Do With It?

**Tuesday, April 4, 2023; 11 AM – 12 PM PT:** Part 2: Let's Work Together (to Make Families' Lives Easier)! How to Coordinate Eligibility and Enrollment to Increase Equitable Access to Services

**Thursday, May 4, 2023; 11 AM – 12 PM PT:** Part 3: Don't Do It Alone! Engage the Right Partners to Plan for Your ECIDS

**Thursday, June 8, 2023; 12 PM – 1 PM PT:** Part 4: Information Is Key: Engaging Families by Supporting Decision-Making

## Get the latest news from SRI Education

[SRIEducationNews.org](http://SRIEducationNews.org)



[CollegeCareerPathways.org](http://CollegeCareerPathways.org)



[MultilingualLearner.org](http://MultilingualLearner.org)



[StudentBehaviorBlog.org](http://StudentBehaviorBlog.org)



## Join our team!



View our open positions  
at [sri.com/careers](http://sri.com/careers)

We are committed to a diverse and inclusive workplace and to creating equitable learning opportunities for all students.

Thank you  
**SRI Education**<sup>™</sup>

[sri.com/education-learning](http://sri.com/education-learning)

 [@SRI\\_Education](https://twitter.com/SRI_Education)